



3D SOLUTIONS

19 bis avenue Duguay Trouin  
78960 Voisins Le Bretonneux

Tel: +33 (0)1 30 60 03 33

Email : info@3dsolutions.fr

www.3dsolutions.fr

**UnionTech**™  
Create your imagination

# RSPro 450

## A New Dimension in Stereolithography 3D Printing

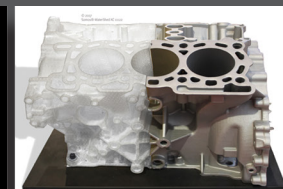
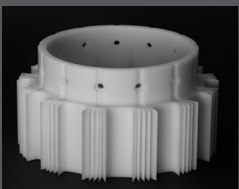
- Cost-effective ownership throughout entire life cycle
- Freedom to collaborate and innovate: open design for materials and machine access
- Printed parts demonstrate excellent sidewall quality and fine detail, contributing to lower post-finishing requirements



### SYSTEM FEATURES

- Scanning speed of up to 12 m/s
- Closed-loop control regulates platform movement, laser power, resin level, resin temperature, and vacuum pressure to ensure accuracy and stability
- Granite recoater rim for enhanced stability
- Can realize 0.002 in (0.05 mm) layer thickness for excellent surface quality
- Convenient assembly and disassembly of platform
- Telecontrol system for remote control and order processing
- Plunger-style leveling
- Pump-fed auto refill capability
- Components from top international brands—Spectra-Physics, SCANLAB, and Panasonic
- Full freedom of choice in materials: equipment uses any 355 nm SL material
- Three levels of access (Operator, Engineer, and Expert) controlled by user
- Changeable vat
- CE certified

Versatile Application Range • High Accuracy • Excellent Surface Aesthetics



# RSPro 450 Technical Data\*

\*Specifications are subject to change; consult with your sales representative for confirmation of current offering.

Build Envelope Capacity	17.7 x 17.7 x 15.7 in (450 x 450 x 400 mm)
Maximum Part Weight	110 lb (50 kg)
Accuracy	Part size < 3.9 in (100 mm): ±0.004 in (±0.1 mm) Part size ≥ 3.9 in (100 mm): ±0.1% x L Accuracy may vary depending on parameters, part geometry/size, pre- or post-processing methods, materials, and environment.
Laser	Solid-state frequency tripled Nd:YVO <sub>4</sub>
Wavelength	354.7 nm
Beam Size	Nominal 0.003 – 0.005 in (0.08 – 0.12 mm)
Scanning Speed	12 m/s (maximum); 6–10 m/s (typical)
Controller	UnionTech™ RSCON
Part Preparation	Materialise Magics
Operating System	Windows 7, Windows 10
Input Data File Format	STL
Network Type and Protocol	Ethernet, IEEE 802.3 using TCP/IP and NFS
Layer Thickness	0.002 in (0.05 mm) minimum; 0.01 in (0.25 mm) maximum
Electrical Requirements	110-120 VAC, 60 Hz, single-phase, 20 amps (with supplied converter)
Laser Warranty	5,000 hours or 15 months (whichever comes first)
Base Plate/Recoater Rim	Granite
Systems Control	Closed-loop
Weight	3,406 lb (1,545 kg) with 331 lb (150 kg) initial fill inside
Power (nominal)	At head 800 mW (typical 300 mW at material surface under nominal optical path condition)

## Operating Environment

Temperature Range	72–79°F (22–26°C)
Maximum Change Rate	1°C/hour
Relative Humidity	<40% non-condensing
Space Requirements (W x D x H)	53.1 x 54.3 x 89.8 in (1,350 x 1,379 x 2,282 mm)

## Accessories

Platform Change Carts	Manual offload cart optional
Processing and Finishing	Post-curing unit
System Warranty	One-year warranty, under UnionTech's Purchase Terms and Conditions