



3D SOLUTIONS
 19 bis avenue Duguay Trouin
 78960 Voisins Le Bretonneux
 Tel: +33 (0)1 30 60 03 33
 Email : info@3dsolutions.fr
 www.3dsolutions.fr

UnionTech™
 Create your imagination

RSPro 800

A New Dimension in Stereolithography 3D Printing

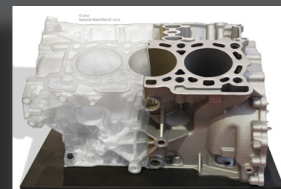
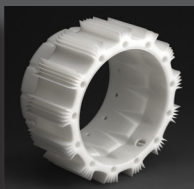
- Cost-effective ownership throughout entire life cycle
- Freedom to collaborate and innovate: open design for materials and machine access
- Printed parts demonstrate excellent sidewall quality and fine detail, contributing to lower post-finishing requirements



SYSTEM FEATURES

- Scanning speed of up to 15 m/s
- Closed-loop control regulates platform movement, laser power, resin level, resin temperature, and vacuum pressure to ensure accuracy and stability
- Granite recoater rim for enhanced stability
- Can realize 0.003 in (0.07 mm) layer thickness for excellent surface quality
- Convenient assembly and disassembly of platform
- Telecontrol system for remote control and order processing
- Plunger-style leveling
- Pump-fed auto refill capability
- Components from top international brands—Spectra-Physics, SCANLAB, and Panasonic
- Full freedom of choice in materials: equipment uses any 355 nm SL material
- Three levels of access (Operator, Engineer, and Expert) controlled by user
- Changeable vat (optional)
- CE certified

Versatile Application Range • High Accuracy • Excellent Surface Aesthetics



RSPro 800 Technical Data

* Specifications are subject to change; consult with your sales representative for confirmation of current offering.

Build Envelope Capacity	31.5 x 31.5 x 21.7 in (800 x 800 x 550 mm)
Maximum Part Weight	330.7 lb (150 kg)
Accuracy	Part size < 3.9 in (100 mm): ±0.006 in (±0.15 mm) Part size ≥ 3.9 in (100 mm): ±0.15% x L Accuracy may vary depending on parameters, part geometry/size, pre- or post-processing methods, materials, and environment.
Laser	Solid-state frequency tripled Nd:YVO ₄
Wavelength	354.7 nm
Beam Size	Nominal 0.005 – 0.008 in (0.12 – 0.20 mm)
Scanning Speed	15 m/s (maximum); 6–8 m/s (typical)
Controller	UnionTech™ RSCON
Part Preparation	Materialise Magics
Operating System	Windows 7, Windows 10
Input Data File Format	STL
Network Type and Protocol	Ethernet, IEEE 802.3 using TCP/IP and NFS
Layer Thickness	0.003 in (0.07 mm) minimum; 0.01 in (0.25 mm) maximum
Electrical Requirements	110-120 VAC, 60 Hz, single-phase, 20 amps (with supplied converter)
Laser Warranty	5,000 hours or 15 months (whichever comes first)
Base Plate/Recoater Rim	Granite
Systems Control	Closed-loop
Weight	5,952 lb (2,700 kg) with 1,146 lb (520 kg) initial fill inside
Power (nominal)	At head 800 mW (typical 300 mW at material surface under nominal optical path condition)

Operating Environment

Temperature Range	72–79°F (22–26°C)
Maximum Change Rate	1°C/hour
Relative Humidity	<40% non-condensing
Space Requirements (W x D x H)	71.6 x 63.6 x 90 in (1,819 x 1,616 x 2,287 mm)

Accessories

Platform Change Carts	Manual offload cart optional
Processing and Finishing	Post-curing unit
System Warranty	One-year warranty, under UnionTech's Purchase Terms and Conditions

UnionTech[™]
Create your imagination

3D SOLUTIONS

REV 04-02-2017

Shanghai Union Technology Corporation
Room 102, Unit 40, 258 Xinzhuan Rd, Songjiang High Science & Technology Park
Caohejing Developing Zone, Shanghai (201612)
Tel: +86 21 6497 8786
www.UnionTech3D.com